



THE PALMS

— AT OLD PONTE VEDRA —

A COASTAL NEIGHBORHOOD WITH ARCHITECTURAL ELEGANCE



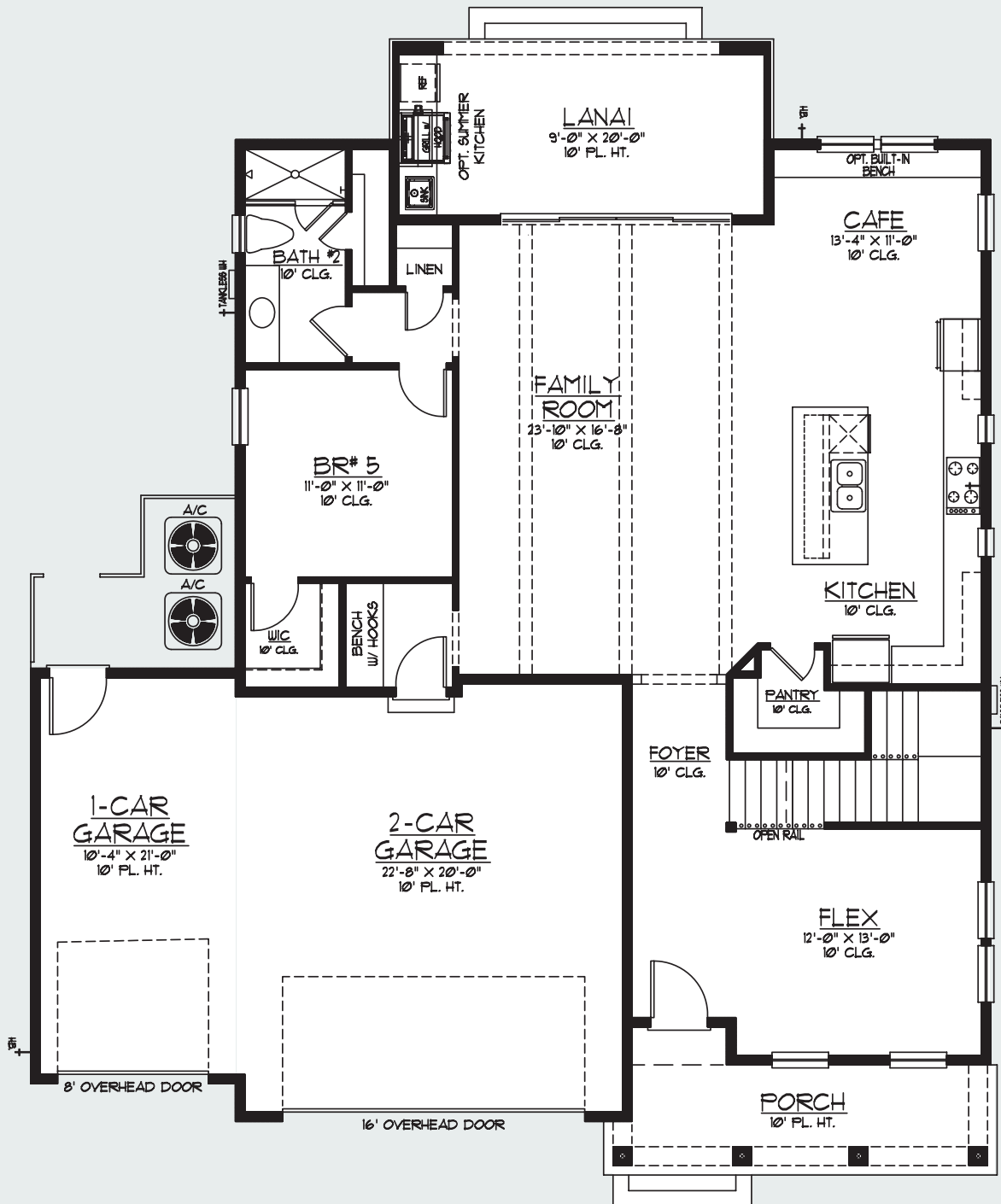
LUXURY HOMES
by MARCUS MEIDE



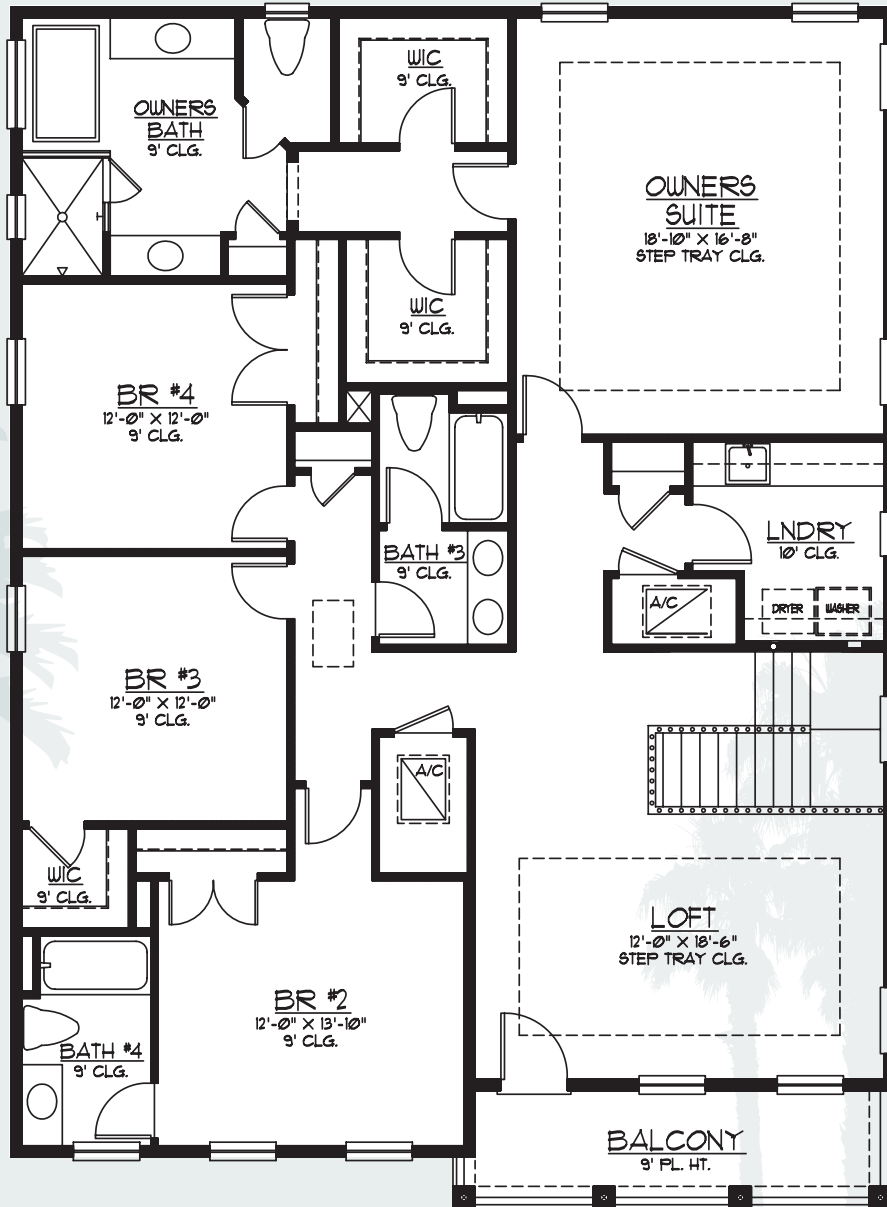
Antigua

5 BEDROOM // 4 BATH // 3,430 SQFT // 51'-2" X 60'-0"

1st
FIRST FLOOR PLAN



2nd
SECOND FLOOR PLAN



Antiqua

5 BEDROOM // 4 BATH // 3,430 SQFT // 51'-2" X 60'-0"

Antigua

5 BEDROOM // 4 BATH // 3,430 SQFT // 51'-2" X 60'-0"

Site Map

★ Lots that can accommodate this floorplan



THE PALMS
AT OLD PONTE VEDRA

LUXURY HOMES
by MARCUS MEIDE

LIC: #CGC1259652

