



THE PALMS  
— AT OLD PONTE VEDRA —

A COASTAL NEIGHBORHOOD WITH ARCHITECTURAL ELEGANCE



LUXURY HOMES  
by MARCUS MEIDE



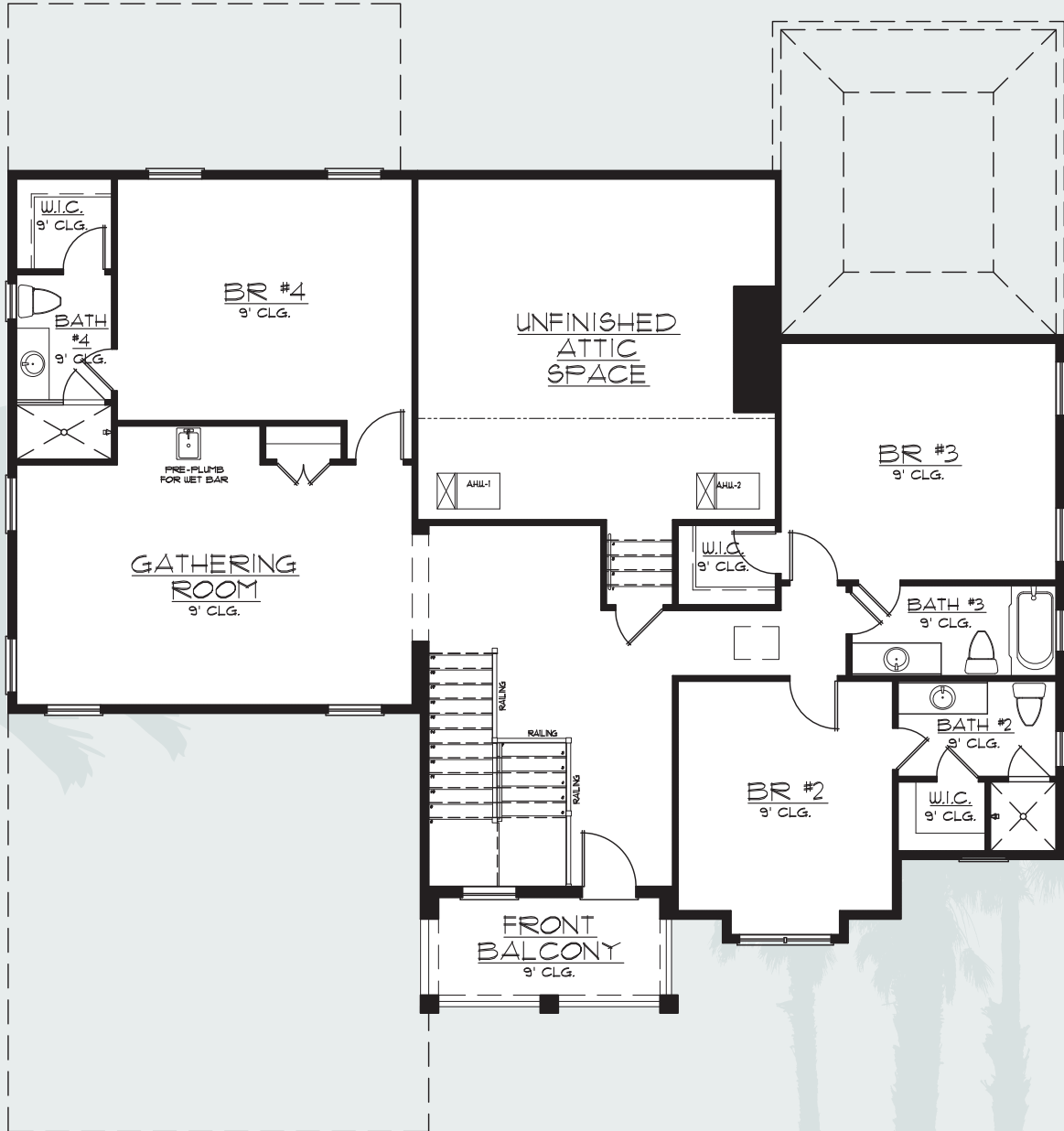
*Catalina*

4 BEDROOM // 3.5 BATH // 3,795 SQFT // LOT 21

1st  
FIRST FLOOR PLAN



2nd  
SECOND FLOOR PLAN



*Catalina*

4 BEDROOM // 3.5 BATH // 3,795 SQFT // LOT 21

# Catalina

4 BEDROOM || 3.5 BATH || 3,795 SQFT || LOT 21

## Site Map

★ Lots that can accommodate this floorplan



**THE PALMS**  
AT OLD PONTE VEDRA



LUXURY HOMES  
by MARCUS MEIDE

LIC: #CGC1259652

