



# THE PALMS

— AT OLD PONTE VEDRA —

A COASTAL NEIGHBORHOOD WITH ARCHITECTURAL ELEGANCE



LUXURY HOMES  
by MARCUS MEIDE

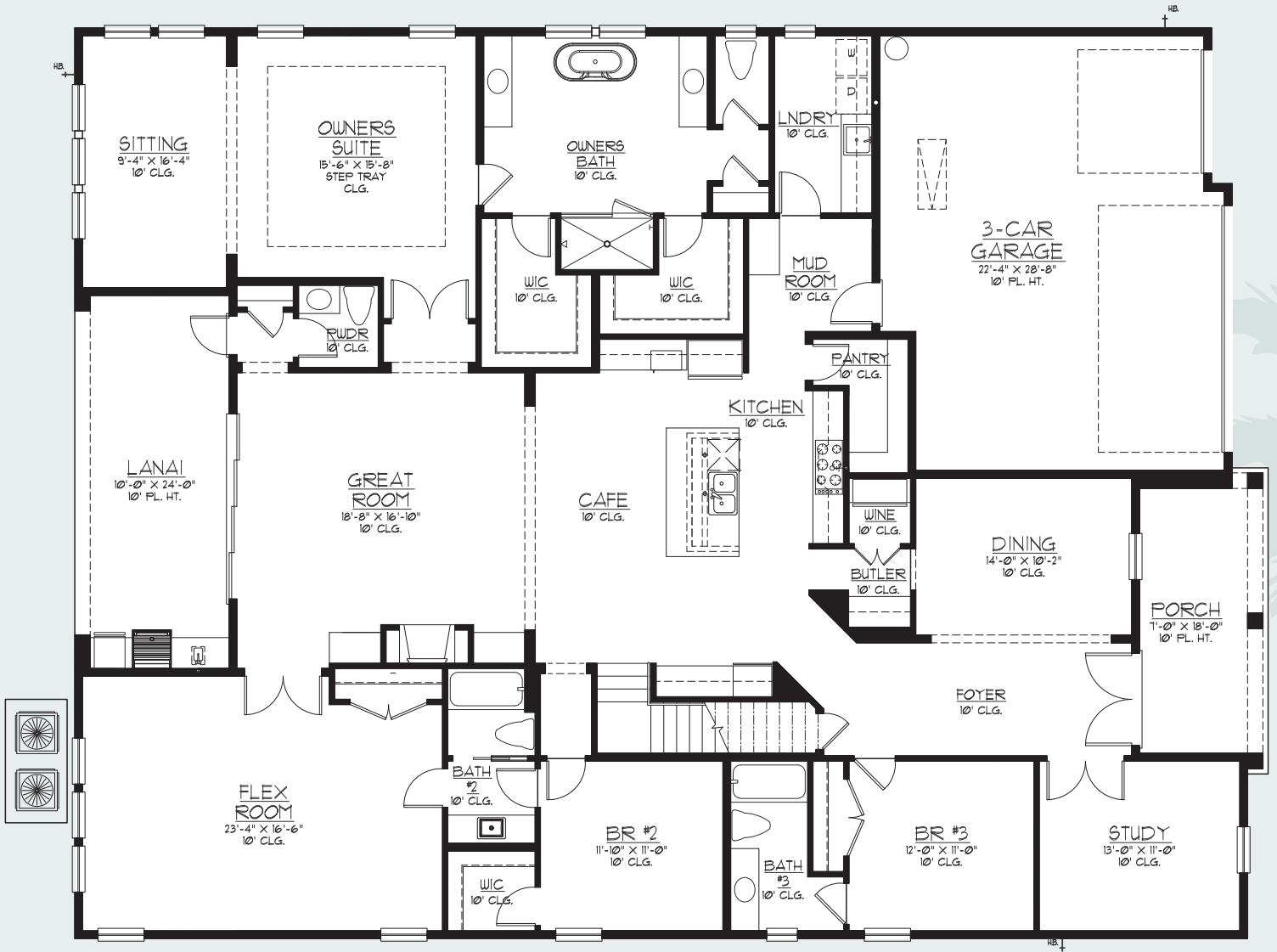


*Freeport Coastal*

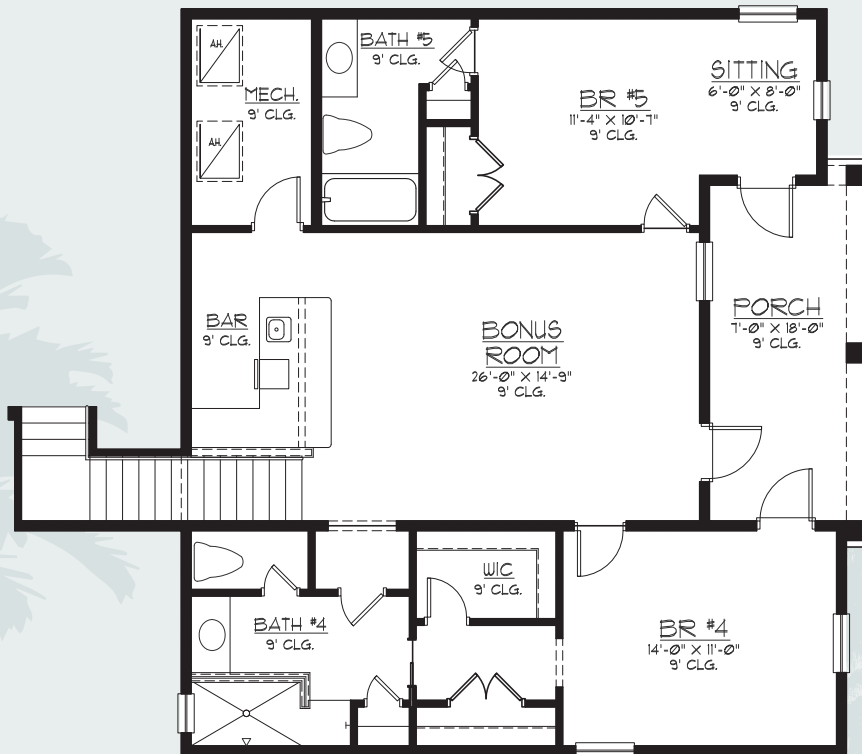
5 BEDROOM || 5.5 BATH || 4,617 SQFT || 59'-0" X 77'-0"

# 1st

## FIRST FLOOR PLAN



2nd  
SECOND FLOOR PLAN



  
THE PALMS  
— AT OLD PONTE VEDRA —

Freeport Coastal

5 BEDROOM || 5.5 BATH || 4,617 SQFT || 59'-0" X 77'-0"

# Freeport Coastal

5 BEDROOM // 5.5 BATH // 4,617 SQFT // 59'-0" X 77'-0"

## Site Map

★ Lots that can accommodate this floorplan



THE PALMS  
AT OLD PONTE VEDRA

LUXURY HOMES  
by MARCUS MEIDE

LIC: #CGC1259652

