



THE PALMS  
— AT OLD PONTE VEDRA —

A COASTAL NEIGHBORHOOD WITH ARCHITECTURAL ELEGANCE



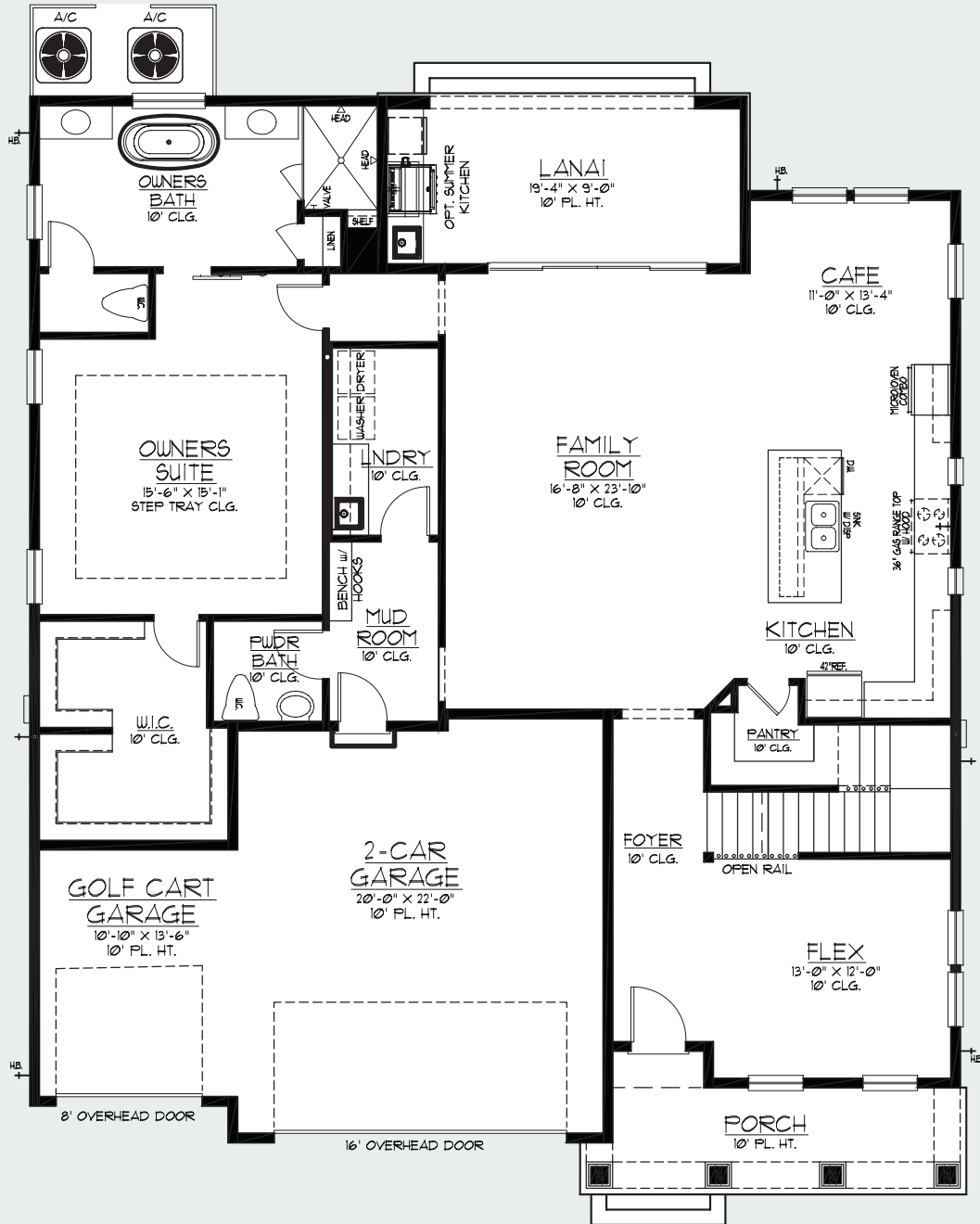
LUXURY HOMES  
by MARCUS MEIDE



*Antiqua II Coastal*

3 BEDROOM || 3.5 BATH || 2,997 SQFT || 51'-0" X 60'-0"

# 1st FLOOR PLAN



2nd  
SECOND FLOOR PLAN



*Antigua II Coastal*

3 BEDROOM || 3.5 BATH || 2,997 SQFT || 51'-0" X 60'-0"

# Antigua II Coastal

3 BEDROOM // 3.5 BATH // 2,997 SQFT // 51'-0" X 60'-0"

## Site Map

★ Lots that can accommodate this floorplan



THE PALMS  
AT OLD PONTE VEDRA

LUXURY HOMES  
by MARCUS MEIDE

LIC: #CGC1259652

